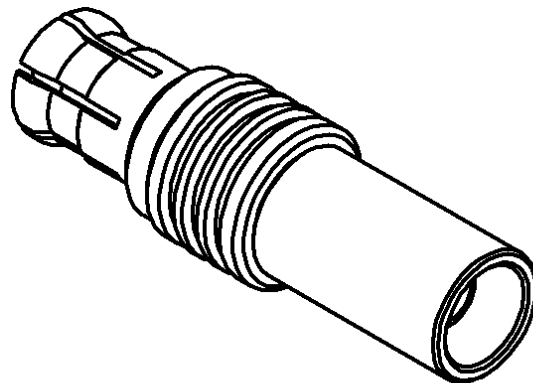
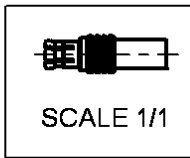
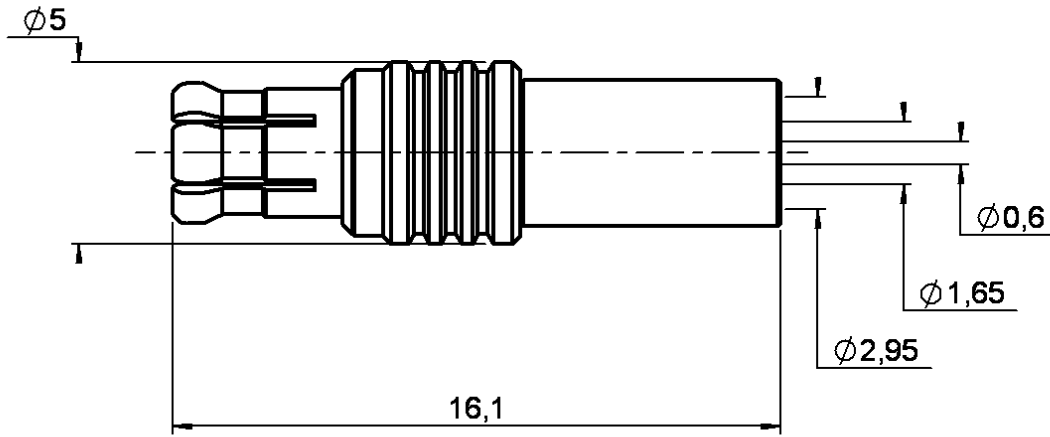


STRAIGHT PLUG CRIMP TYPE

R113.082.020

CABLE 2.6/50 S

Series : MCX



CECC 22221-MCX



All dimensions are in mm.

| COMPONENTS | MATERIALS | PLATINGS (µm) |
|----------------|------------------|------------------------|
| BODY | BRASS | BBR 2 |
| CENTER CONTACT | BRASS | GOLD 1.3 OVER NICKEL 2 |
| OUTER CONTACT | BERYLLIUM COPPER | BBR 2 |
| INSULATOR | PTFE | |
| GASKET | - | |
| OTHERS PARTS | BRASS | BBR 2 |
| - | - | - |
| - | - | - |

Issue : 0107 E

In the effort to improve our products, we reserve the right to make changes judged to be necessary.



STRAIGHT PLUG CRIMP TYPE

R113.082.020

CABLE 2.6/50 S

Series : **MCX**

PACKAGING

| Standard | Unit | Other |
|------------|-------------------|-------------------|
| 100 | 'W' option | Contact us |

SPECIFICATION

ELECTRICAL CHARACTERISTICS

| | | | |
|---------------------------------|---------------|--------------|--------------------------|
| Impedance | | 50 | Ω |
| Frequency | | 0-6 | GHz |
| VSWR | 1.10 + | 0.040 | x F(GHz) Maxi |
| Insertion loss | | 0.25 | \sqrt{F} (GHz) dB Maxi |
| RF leakage | - (| NA | - F(GHz)) dB Maxi |
| Voltage rating | | 170 | Veff Maxi |
| Dielectric withstanding voltage | | 500 | Veff mini |
| Insulation resistance | | 1000 | M Ω mini |

CABLE ASSEMBLY

| Stripping | a | b | c | d | e | f |
|-----------|------|------|------|------|------|------|
| mm | 2.50 | 6.00 | 10.0 | 0.00 | 7.50 | 0.00 |

Assembly instruction : **Crimp 02**

Recommended cable(s)
 KX 22A
 RG 188
 RG 316

Cable retention
 - pull off **53** N mini
 - torque **1.3** N.cm

MECHANICAL CHARACTERISTICS

| | | | |
|----------------------------|--|-----------|-----------|
| Center contact retention | | | |
| Axial force – Mating end | | 10 | N mini |
| Axial force – Opposite end | | 10 | N mini |
| Torque | | NA | N.cm mini |

| | | | |
|--------------------|--|--------------|------|
| Recommended torque | | | |
| Mating | | NA | N.cm |
| Panel nut | | NA | N.cm |
| Clamp nut | | NA | N.cm |
| A/F clamp nut | | 0.000 | mm |

| | | | |
|-------------|--|--------------|-------------|
| Mating life | | 500 | Cycles mini |
| Weight | | 0.959 | g |

TOOLING

| Part Number | Description | Hexagon |
|--------------|---------------|-----------------------|
| . | . | . |
| R282.271.000 | CRIMPING TOOL | 3.25 - SQUARE 0.72 |
| R282.235.003 | CRIMPING DIES | 3.25 |
| R282.293.000 | CRIMPING TOOL | - |

OTHERS CHARACTERISTICS

-

ENVIRONMENTAL

| | | | |
|-----------------------|--|-----------------|--------------|
| Operating temperature | | -55/+155 | $^{\circ}$ C |
| Hermetic seal | | NA | Atm.cm3/s |
| Panel leakage | | NA | |

Issue : **0107 E**

In the effort to improve our products, we reserve the right to make changes judged to be necessary.

